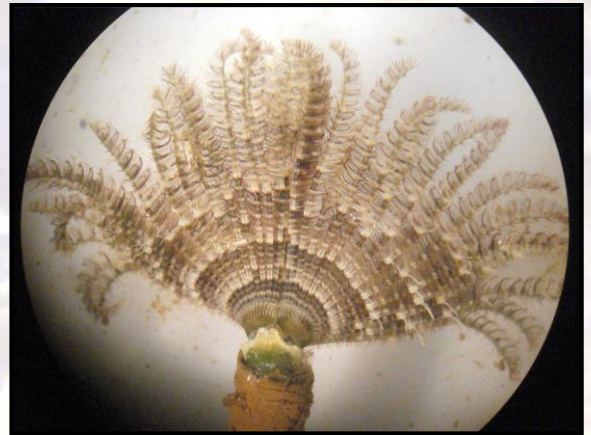


## *Branchiomma bairdi* (McIntosh, 1885)

Phylum: Annelida

### Description:

It is a filter-feeder organism characterized by presence of a radiolar crown, with two types of stylodes on the radioles. The color of the radiolar crown varied from brownish to orange, often with stripes in cream or dark brown.



### Distribution:

The origin of this species is still unknown, and it has been recorded as an invasive species for many places.

- 2004 Pacific coast of Panama
- 2005 Cyprus
- 2009 Gulf of California
- 2009 Suez canal
- 2013 Mediterranean Sea
- 2013 Canary Islands
- [2013 MADEIRA](#)

### Some impacts:

Hull fouling is the most likely vector for the introduction of the species. Some impacts are:

- Alteration of the turbulence and boundary layer features for larvae.
- Provision of space for settlement.
- Bio-irrigation or nutritional supply.
- Incorporation of plant material providing an extra habitat for invertebrates.

