

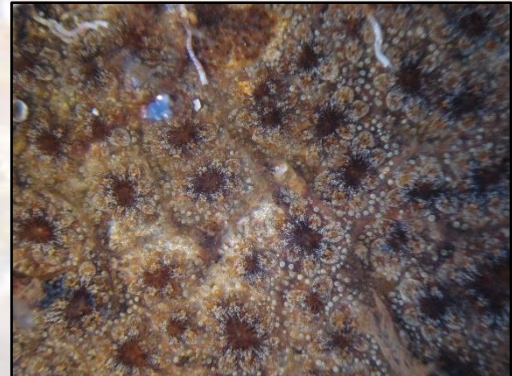
## *Botryllus schlosseri* (Pallas, 1766)

Golden Star Tunicate

Phylum: Chordata

### Description:

Is a colonial tunicate that can form colonies as large as 25 mm x 150 mm and up to 2 mm thick. Color is highly variable within and among colonies, and can be yellow, dark purple, red, brown or black.



### Distribution:

The origin is currently unknown. It has been introduced to many remote parts of the world by shipping:

- 1905 Australia
- 1922 New Zeland
- 1932 Bermuda
- 1948 Chile
- 1955 South Africa
- 1964 Argentina
- 1971 Azores Island
- **2004 MADEIRA**

### Some impacts:

It's a common fouling organism in temperate harbors and on ships.

This species was found to adversely affect native eelgrass *Zostera marina* in southeastern Nova Scotia by fouling the leaves of the grass, and reducing the availability of light. Fouling increased the mortality of the plants.

It's likely to have an adverse impact on eelgrass beds, increasing mortality of the plants and decreasing their productivity.

